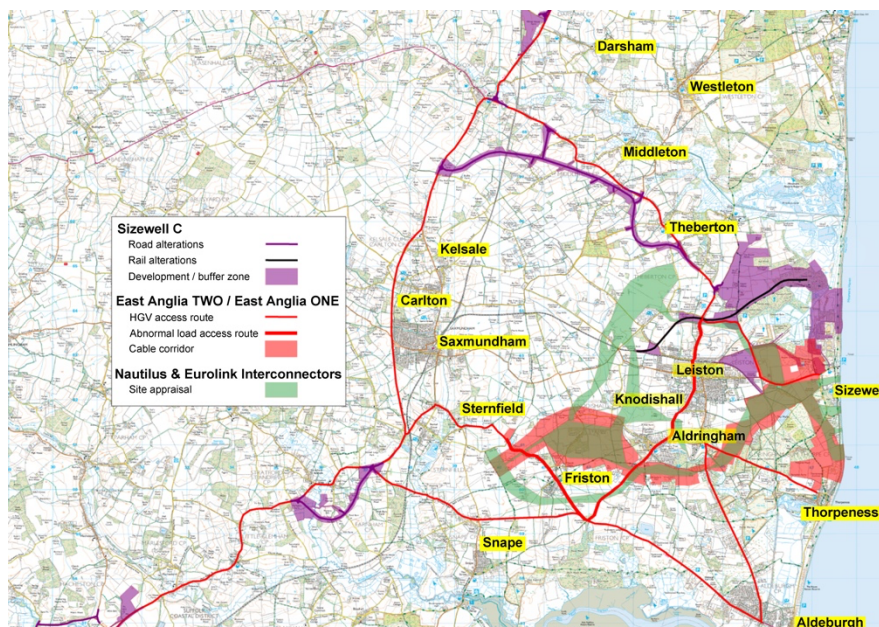


## *Suffolk Historic Churches Trust*

### **RIDE & STRIDE – SATURDAY 11<sup>TH</sup> SEPTEMBER**

#### ***Ian & Mary Cycle to Raise Awareness of the Energy Projects***



Ian & Mary Shipman of Friston have raised around £16,000 over 25 years for the Trust, which exists to support the preservation of our valuable Heritage Churches. This year they plan to cycle to 21 churches to raise awareness of the scale of the various energy projects which threaten this area of East Suffolk and the Heritage Coast.

The map shows the huge spread of the impacts of the projects on our countryside and communities. Ian & Mary will be cycling 30 miles to visit churches across 16 towns and villages - a challenge but demonstrates the enormity of the energy projects. These are:-

- **Sizewell C** the tentacles of which spread from Darsham to Wickham Market
- **Scottish Power Renewables/National Grid** with three substations and ancillary equipment covering 32 acres, taking 100 acres out of arable use in Friston alone, plus 9 km of cable routes, 70 metres wide from Thorpeness, via Sizewell and inland to Friston.
- **National Grid Ventures'** proposal to locate the substation for its **Nautilus** project within the same area, to be connected to the new National Grid substation in Friston. Another interconnector **Eurolink** is also in the pipeline.

If approved, the construction of these projects will last over 12 years causing major disruption to residents and visitors, threatening the tourist economy, closing footpaths and causing environmental damage. Our churches will also be affected, with Friston Church being less than 250M from the substations, harming the peace and tranquillity of this special place.

If you would like to support Ian & Mary, please contact them on 01728 688698 or the organiser Simon Ive on 01728 688106. Alternatively online donations may be made on the Just Giving website at [www.justgiving.com/fundraising/St-Mary-Friston](http://www.justgiving.com/fundraising/St-Mary-Friston)

